

# IntelliXseal™ SA

## Semi-Automatic Sheet Heat Sealer

The IntelliXseal™ SA is a semi-automatic sheet heat sealer which is compatible with a wide range of seals and plates of differing designs and heights.

With variable temperature and time settings, sealing conditions are easily optimized to produce a 100% tight seal, eliminating sample loss.

Plate and seal are placed on the holder, the “Operate” button pressed and the drawer automatically closes. The sealing process is controlled by an electric mechanism.

Heat sealers provide a mechanism for controlled plate sealing, eliminating variation and giving consistent sealing every time.



### FEATURES

- ✓ Variable time and temperature control
- ✓ Simple, three button operation
- ✓ Real-time temperature display
- ✓ Auto stand-by function and switch-off mode
- ✓ Compatible with all SBS microplates
- ✓ Small footprint
- ✓ RS-232 serial port
- ✓ SiLA compatible
- ✓ 12 month warranty



### BENEFITS

- ✓ Enables optimization of any seal / plate type
- ✓ Ease of use
- ✓ Rapid heating element enables fast start-up, saving time
- ✓ Conserves energy by reducing temperature of heating element down to 60°C or switching off after defined time
- ✓ Flexibility for wide range of consumables, e.g. competitor plates
- ✓ Minimal bench space
- ✓ Enables full integration within robotic automation systems
- ✓ Easy integration with SiLA compliant devices using SiLA driver
- ✓ Instrument reliability

### TECHNICAL SPECIFICATIONS

Parameter	Specification
Dimensions (W x L x H)	181 x 275 x 310 mm
Sealing Temperature Range	60-200°C
Sealing Time Range	0-10 sec
Weight	9 kg
Power Supply	110/230V
Power Consumption	300 W (max)
Connection	RS-232 serial port

Automated  
Storage Systems

Cryopreservation &  
Cold Chain Solutions

Informatics &  
Technical Solutions

Sample Storage,  
Lab Services & Transport

Sample Consumables  
& Instruments

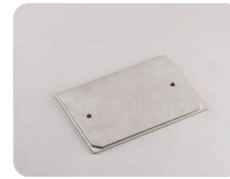
# The IntelliXseal™ SA Is Compatible With A Wide Range Of Seals & Plates Of Differing Designs & Heights



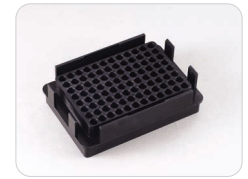
## Adapters

The IntelliXseal SA employs a unique and cost saving adapter system

- ✔ Deep well plates and most other skirted plates can be sealed on the standard plate support adapter (59-2001)
- ✔ For all other 96 well PCR plates, an additional plate support adapter (59-2003, optional extra) must be used
- ✔ Both adapters can also be combined for easier handling of shallow plates such as 384 well PCR plates.
- ✔ For best sealing results with Random Access seals, 8 different adapters are available to offer the perfect plate support and seal alignment



59-2001 Plate Support Adapter, Standard



59-2003 Plate Support Adapter, PCR 96



59-2005 Plate Support Adapter, Random Access, Low Profile



## Sealing Aids

- ✔ For better sealing of films which have a tendency to curl, 4titude® offers sealing aids
- ✔ A sealing frame for use with all other plate designs is supplied when ordering the optional 59-2003 plate support adapter



59-2008 Weighted Sealing Platen



59-2009 Sealing Frame

## Plate Formats

The following plate formats can be used with the appropriate plate adapter:

- ✔ Standard SBS footprint PP & PS plates & deepwell blocks
- ✔ PCR plates (skirted, semi-skirted and non-skirted formats)

## Ordering Information

### IntelliXseal SA Semi-Automatic Sheet Heat Sealer

Includes: Power cord, manual, standard plate support adapter (59-2001), 12 months parts and labour warranty

Code	Details	Quantity
59-2000	IntelliXseal SA	1

### Accessories

59-2001	IntelliXseal SA Plate Support Adapter, Standard, supplied with the unit, for skirted 96 and 384 well plates	1 adapter
59-2002	IntelliXseal SA Plate Support Adapter, Roche 1536, for Roche 1536 well PCR plates	1 adapter
59-2003	IntelliXseal SA Plate Support Adapter, PCR 96, for 96 well PCR plates	1 adapter
59-2004	IntelliXseal SA Plate Support Adapter, PCR 384, for 384 well PCR plates	1 adapter
59-2005	IntelliXseal SA Plate Support Adapter, Random Access, low profile, for low profile plates	1 adapter
59-2006	IntelliXseal SA Plate Support Adapter, Storage 96 and 384; for 96 and 384 well storage plates	1 adapter
59-2007	IntelliXseal SA Plate Support Adapter, PCR 96 MPL, for 4ti-LB0109 and 96 well PCR plates	1 adapter
59-2008	IntelliXseal SA Weighted Sealing Platen	1 platen
59-2009	IntelliXseal SA Sealing Frame, for use with Plate Support Adapter, PCR 96 (59-2003)	1 frame

Automated  
Storage Systems

Cryopreservation &  
Cold Chain Solutions

Informatics &  
Technical Solutions

Sample Storage,  
Lab Services & Transport

Sample Consumables  
& Instruments

Learn more – [www.brookslifesciences.com](http://www.brookslifesciences.com)

Contact us – [www.brookslifesciences.com/contact-us](http://www.brookslifesciences.com/contact-us)

© Copyright 2020 Brooks Automation, Inc. B2077-20 4C-20