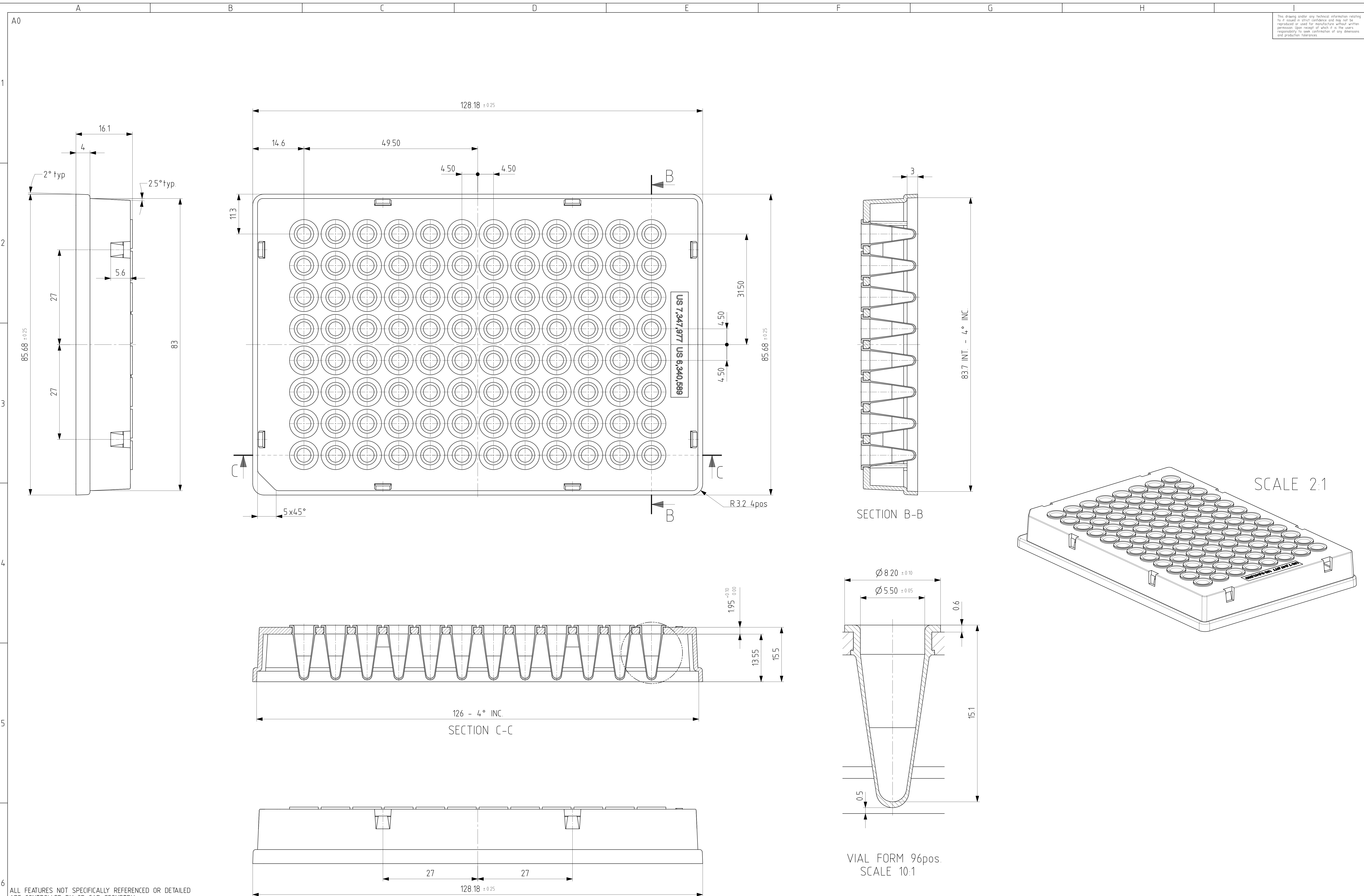
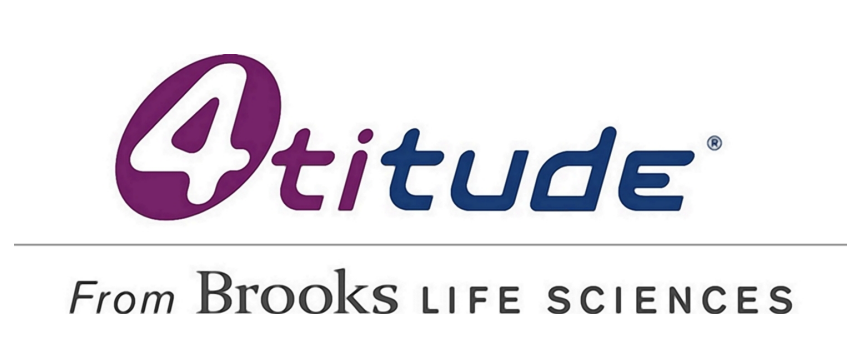


This drawing and/or any technical information relating to it issued in strict confidence and may not be reproduced or used for manufacture without written permission. Sign recall of which it is the users responsibility to seek confirmation of any dimensions and production tolerances.



ALL FEATURES NOT SPECIFICALLY REFERENCED OR DETAILED ARE CONTROLLED BY 3D CAD GEOMETRY.

ISSUE	DATE	AMENDMENT	ISSUE	DATE	AMENDMENT
A	25.02.2020	Original marketing drawing prepared based on the 4TI-0960/RIG-INTF_issue_A technical drawing			



SCALE
3:1

CUSTOMER	Zoltan Erdelyi	DRAWN	Zoltan Erdelyi
CUSTOMER DRG. No.		DATE	25.02.2020
MATERIAL	Frame: glass filled polycarbonate Tubes: polypropylene	CHECKED & APPROVED	Paresh Patel
TOLERANCES	0 ±0.25 0.0 ±0.20 0.00 ±0.10	DATE	
GENERAL TOLERANCES (UNLESS OTHERWISE STATED)	ANGULAR ±0.30 (ALL DIMENSIONS IN MILLIMETRES)	Brooks WDT tool numbers	

TITLE	FrameStar 96 Well Skirted PCR Plate (Rigid frame) MARKETING DRAWING
DRAWING No.	4TI-0960/RIG-INTF#MARKETING
SHEET No.	1 OF 1
ISSUE	A